

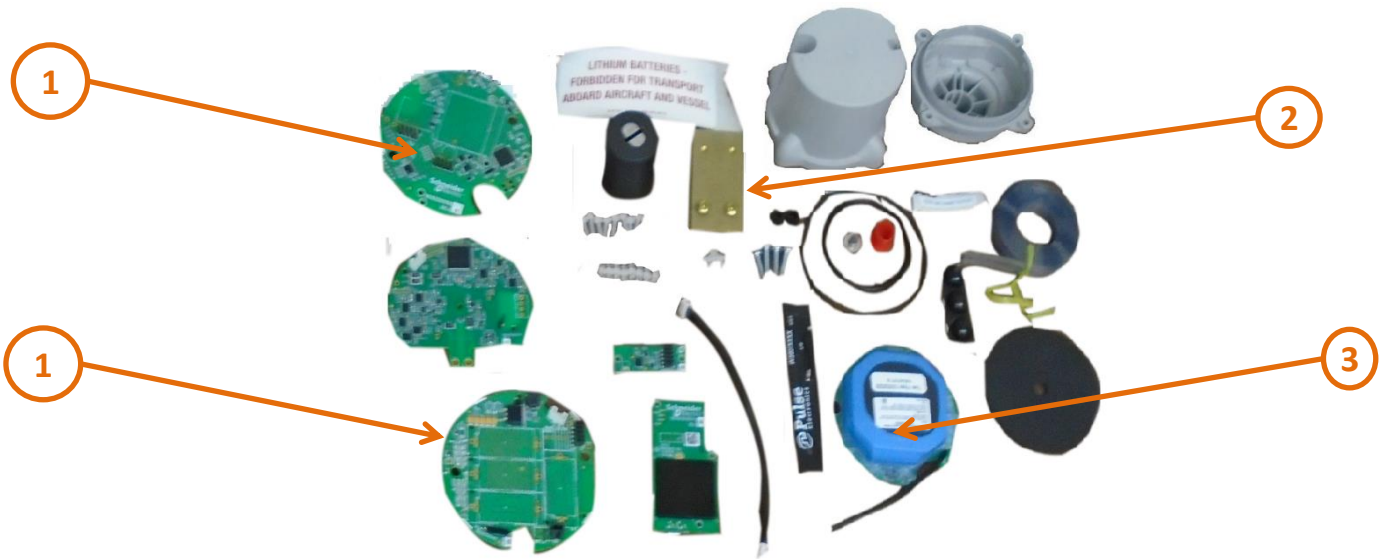
Product End of Life Instructions

RADAR LEVEL MONITOR ASSEMBLY

INDUSTRIAL RADAR MONITORS



End of Life Instructions



Recommendation	Number on drawing	Component / Material	Weight (in g)	Comment
To be depolluted	1	Electronic Board (Communication) > 10cm ²	86,7	
To be dismantled	2	Metals and semimetals	141,5	
To be dismantled	3	Battery Pack	149,8	
Other		Plastics and Other parts	553	

Product description

Manufacturer identification	Schneider Electric
Brand name	Robertshaw
Product function	The Radar Monitor is a battery-powered unit that measures and transmits tank level, device temperature, and other status information to WebView for display to the customer.
Product reference	R0960-VL-IS
Additional similar product references	R0960-VL-IS 086706A0001 R0960-VL-IS-G R0961-VL-IS R0961-VL-IS-G R0962-VL-IS R0962-VL-IS-G R1440-VL-IS R1440-VL-IS-G R1441-VL-IS R1441-VL-IS-G R1442-VL-IS R1442-VL-IS-G R1920-VL-IS R1920-VL-IS-G R1921-VL-IS R1921-VL-IS-G R1922-VL-IS R1922-VL-IS-G R2400-VL-IS R2400-VL-IS-G R2401-VL-IS R2401-VL-IS-G R2402-VL-IS R2402-VL-IS-G
Total representative product mass	907 g
Representative product dimensions	2489.2mm(H) x 133.35mm(W) x 133.35mm(D)
Accessories	No accessories needed
Date of information release	01/2021



Additional information

Legal information	This product family is in the scope of European Union directive 2012/19/EU on Waste Electrical and Electronic Equipment (WEEE). The product family must be disposed according to the legislation of the country. This document is intended for use by end of life recyclers or treatment facilities. It provides the basic information to assure an appropriate end of life treatment for the components and materials of the product.	
In case of special transportation: transportation method	No special transportation required.	
Recyclability potential	43%	Based on "ECO'DEEE recyclability and recoverability calculation method" (version V1, 20 Sep. 2008 presented to the French Agency for Environment and Energy Management: ADEME).

Schneider Electric

www.schneider-electric.com/contact

Country Customer Care Center:

<http://www2.schneider-electric.com/sites/corporate/en/support/operations/local-operations/local-operations.page>

1602 Mustang Drive

Maryville

TN

USA

www.schneider-electric.com

Published by Schneider Electric

ENVEOLI2102004_V1

© 2019 - Schneider Electric – All rights reserved

01/2021